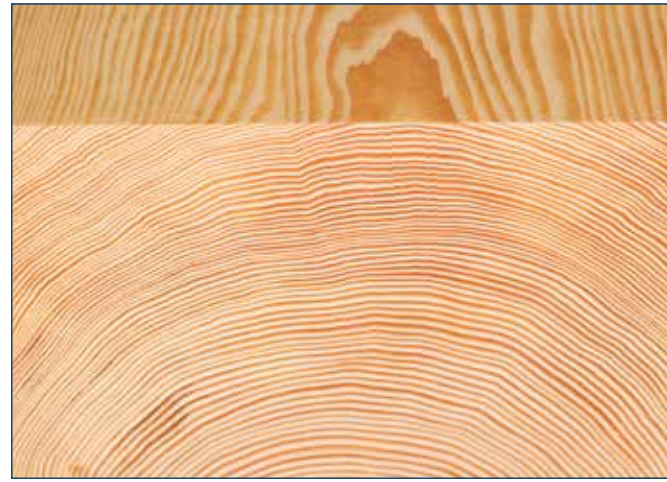


# FRASERWOOD

## Dry Timber

From the West Coast's Pioneer of Heavy Timber Drying



For many projects, green timber meets all the design needs. When engineering or aesthetics dictate a more reliable, predictable and dimensionally stable product, FraserWood provides superior timber drying services that assure a higher standard and the rock-solid conviction that the product you specify is the one delivered.

### Three Levels of Excellence

Faced with the industry's uncertainty of what constitutes dry timber along with competition from less-advanced drying service providers, FraserWood has made it clear and simple for clients by marketing three levels of "dry." These options allow designers and engineers to confidently specify the appropriate product:

**FaceDry™** - Maximum 19% moisture content 1 1/4" from the surface. For uses where a finish, such as paint or stain, will be applied to the timber or log. The member is dried in FraserWood's conventional kiln promoting acceptable performance of finishes and coatings and is comparable to most of our competitors' definitions of "kiln-dried."

**HeartDry™** - Maximum 19% moisture content three inches in toward the heart of the timber. For applications with strict engineering specifications and higher performance expectations, such as commercial projects or for high quality timberwork where finishes and joinery must look just as good 5 years after installation as they do the day installed.

**HeartDry15™** - Maximum 15% moisture content three inches in toward the heart of the timber. For use in more extreme circumstances, such as those in very dry North American localities where year-round relative humidity will typically remain at or below 30%. FraserWood achieves this specification through increased dwell time in our radio frequency kiln.

### Custom Levels of Dry

When project demands require it, we can dry to custom levels. With many species, we can dry timber to levels as low as 8% average moisture content (see chart below).

### The Attributes of FraserWood Dry Timber

- Crafted from superior western woods timber
- Graded for peak performance
- Exceptional stability and connection capacity
- Custom requested levels of dry
- FSC certification available

### Available Sizes:

- Widths: Up to 50"
- Depths: Up to 50"
- Lengths: Up to 60'

Custom Requirements?  
Give Us a Call.



	Alaska Yellow Cedar	White Spruce	Coastal Douglas Fir	Port Orford Cedar Cedar	Western Red
FaceDry	✓	✓	✓	✓	✓
HeartDry™		✓	✓	✓	
HeartDry15™		✓	✓	✓	
Custom Levels		✓	✓		

## Understanding “Dry Timber”

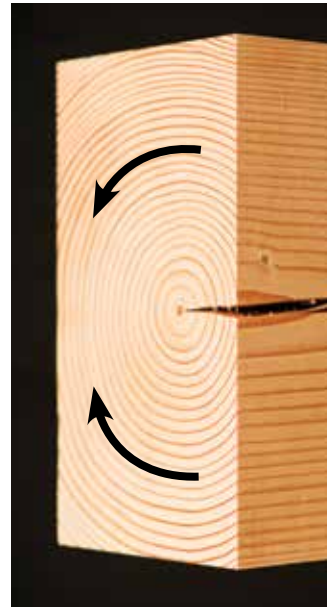
FraserWood was the first manufacturer to recognize that radio frequency drying could be applied to large, solid-sawn timbers, an adapted technology that we’ve perfected over the past decade. FraserWood now has the largest such kiln in North America.

When most grade rules were written, there was no commercially viable process to dry large timbers (material greater than 4" in thickness and width) and no standard was established for large timbers. Because of this there was no reason to develop a means for measuring timber moisture content. Penetrating moisture meters with 1 1/4" pins can effectively measure lumber moisture content in wood that is less than 3" thick, but cannot test larger timbers.

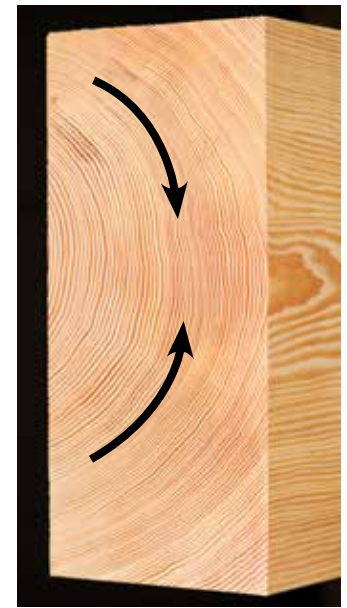
The lack of standards and reliable testing methods has led to some confusion within the industry of what a “kiln-dried timber” is. FraserWood removes any lack of clarity by manufacturing to well-defined, strict standards, letting customers choose the level of dry that works for their project.

FraserWood altered industry assumptions with its development of timber drying technology.

## Seasoning Checks - Natural Characteristics



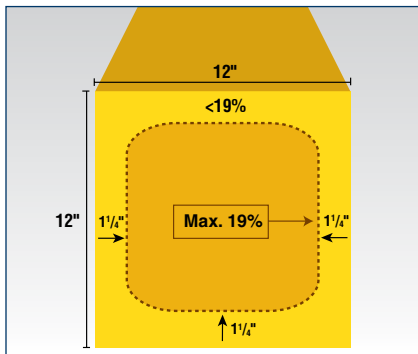
**Boxed Heart:** Because most woods shrink roughly twice as much tangentially as radially, significant seasoning checks are common.



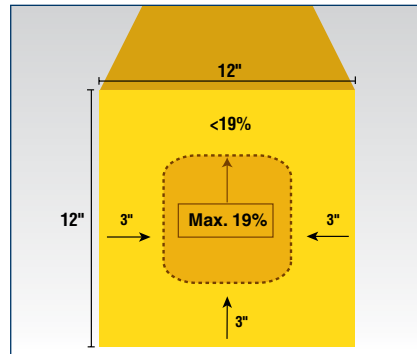
**Free of Heart Center:** More stable than a boxed heart timber because the smaller, radial shrinkage does not restrict the tangential shrinkage.

To learn more, visit the FraserWood website.

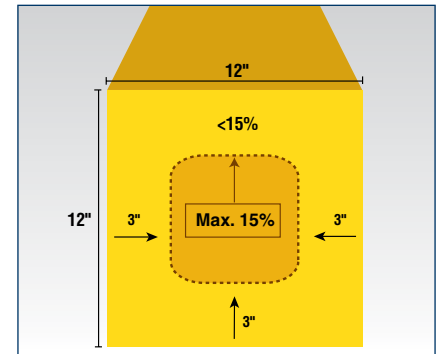
## FraserWood Dry Timber Options:



**FaceDry™** - The exterior faces have been dried to a 19% maximum moisture content to a minimum depth of 1 1/4”.



**HeartDry™** - Dried to a maximum 19% moisture content 3” in toward the heart of the timber. Average MC = less than 17%.



**HeartDry15™** - Dried even further, to a maximum 15% moisture content 3” in toward the heart of the timber. Average MC = less than 13%.



Manufacturing: 39500 Government Road, PO Box 1782, Squamish, BC Canada V8B 0B3  
Toll Free: (888) 898-1385, Ext 114 • [www.fraserwoodindustries.com](http://www.fraserwoodindustries.com)