

FRASERWOOD

EdgeMatched™ Glulam

The Benefits of Laminated Timber with the Consistent, Clean Look of Clear Timbers



Douglas fir vertical grain on all four sides

EdgeMatched™ glulam beams are manufactured to meet the demanding APA strength, stiffness and connection capacity requirements for glue-laminated timbers. They also meet a higher standard for dimensional tolerance, stability, squareness and, above all, visual appeal. The FraserWood method of building glulam timbers yields an engineered wood product recognizable for its beauty and resemblance to solid sawn timber. With the EdgeMatched beam, FraserWood is once again “Extending the reach of natural timber.”

The unnatural, striped appearance of standard glulam results primarily from two characteristics of glulam manufacturing. The layup of standard laminations randomly uses both flat sawn grain and vertical grain on the edges of the lamina and randomly introduces both heartwood and sapwood. The mixture of these appearance characteristics creates the striped, inconsistent appearance of standard glulams.

To reduce these characteristic variations and create the signature clean beauty of EdgeMatched timbers, FraserWood starts with standard APA specified laminations for the core of the glulam. We then edge glue thick vertical grain strips of all heartwood onto the narrow faces of the core laminations using Purbond™ formaldehyde-free glue per APA’s ANSI standard, creating individual lamina which meet your project’s timber width and appearance requirements. These special laminations of all vertical grain heartwood on the narrow face greatly reduce the unnatural, striped wood appearance creating a more consistent grain pattern, color, and texture. Not only can EdgeMatched glulam meet the demanding engineering requirements for a glulam beam, but its visual appeal will allow it to become a feature of any design.

Straight or Curved

Known for delivering dry, stable and square timbers of accurate dimension, FraserWood is extending this tradition to its glulam products. Just as with standard glulam, we manufacture both straight and curved EdgeMatched glulams, and we’ll ensure your order is completed to the FraserWood standard of quality. Take advantage of EdgeMatched glulams’ outstanding specifications and design flexibility to meet your most demanding project requirements.

The Attributes of EdgeMatched™ Glulam

- Crafted from superior western wood species
- Vertical grain or flat-sawn narrow face options
- Manufactured as straight or curved members
- Exceptional strength, stability and connection capacity
- Meets APA and ANSI requirements
- Stamped with certifying agency mark on request

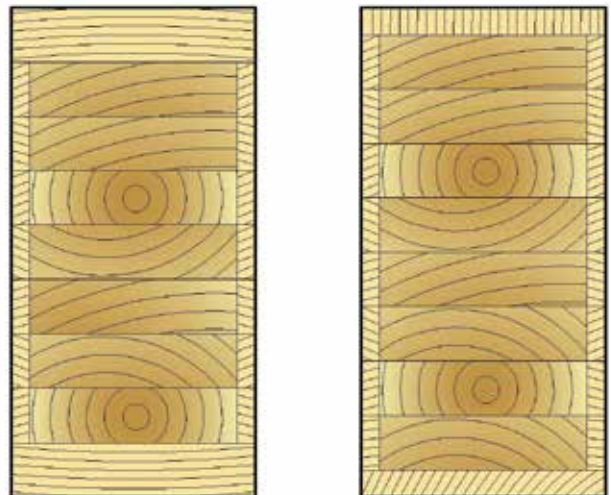
Available Sizes:

- Widths: Up to 16"
- Depths: Up to 36"
- Lengths: Up to 45'

Available Species

- White Spruce
- Douglas fir
- Hemlock
- Western Red Cedar
- Yellow Cedar
- Port Orford Cedar

Custom Requirements? Give Us a Call.



Grain orientation and thickness of top and bottom lamina can be arranged to suit the application.

Certified Strength and Stability

EdgeMatched glulam beams meet all APA and ANSI requirements for structural glue-laminated timbers. When determining the required beam size and strength, just use the same approach you would use to design a standard glulam beam. All of the same specifications apply.

Custom to Meet Your Needs

Our APA-certified manufacturing methods allow us to manufacture EdgeMatched beams to meet your specific needs. We can manufacture any standard or custom glulam dimensions specifically for your project. In addition, we also have the ability to craft the appearance of the face lamina by modifying species, thickness and grain orientation. For example, for a beam that would be featured as a column, we can expose clear vertical grain on all four faces.



Western Red Cedar EdgeMatched Glulam



Douglas fir vertical grained, finger jointed glulam timber.



Top of Douglas fir EdgeMatched glulam showing flat-sawn grain on the narrow face with edge grain on the wide face creating a more natural appearance.

Achieve the highest level of strength, flexibility, and visual appeal with FraserWood's EdgeMatched glulam.



Manufacturing: 39500 Government Road, PO Box 1782, Squamish, BC Canada V8B 0B3

Toll Free: (888) 898-1385, Ext 210 • www.fraserwoodindustries.com